

2016-2017 School Report Card Summary

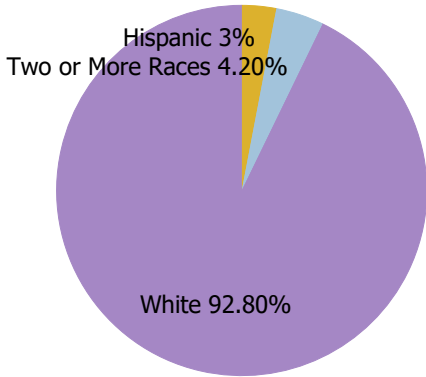
11/6/2017

Hillsboro Elementary School

7348 Hillsboro Rd
Hillsboro, KY 41049
Fleming County Schools
<http://www.fleming.kyschools.us/>

Carol Thompson, Principal
(606) 876-2251
Grade Range: Entry - 6th Grade
Total Students: 167
Brian Creasman, Superintendent

Student Race



Quick Facts

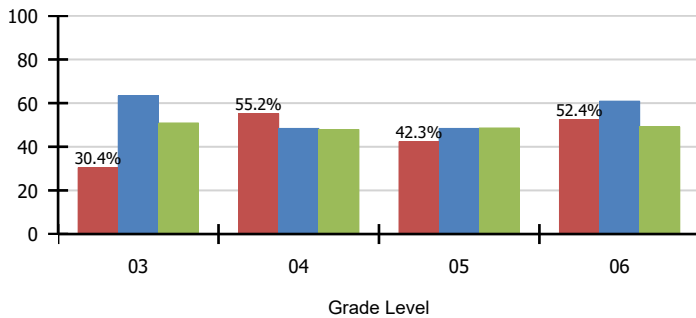
Measure	School	District	State
Student-Teacher Ratio	14:1	15:1	15:1
Total Teachers	16	141	42,146
National Board Certified Teachers	0	7	2,772
First Year and KTIP Teachers	%	15.2%	12.6%
Teacher Turnover	14.3%	20.0%	17.1%
Lunch Status (Percent Free/Reduced)	68.9%	67.8%	60.8%

For more information visit the full School Report Card Website
<http://applications.education.ky.gov/SRC>

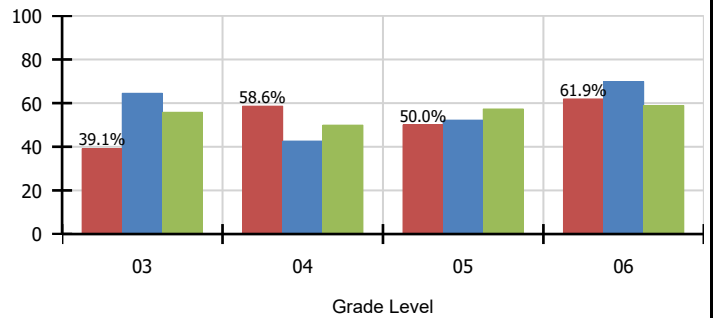
Performance of Tested Students

Percent of Students Proficient/Distinguished

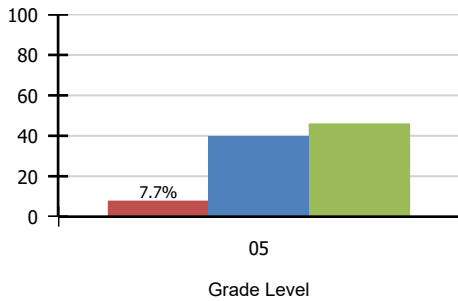
Mathematics



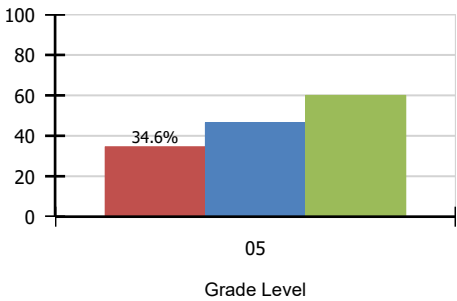
Reading



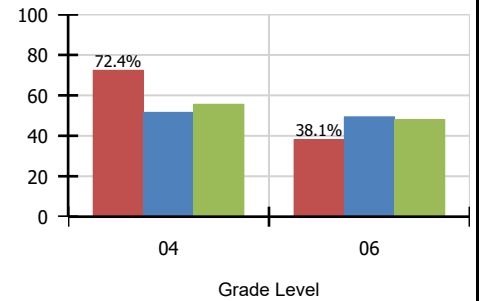
Writing



Social Studies



Language Mechanics



■ SCHOOL ■ DISTRICT ■ STATE

Indicators of Students' Future Success

Measure	School	District	State
Attendance Rate	96.1%	94.7%	94.4%
Graduation Rate	NA	94.9%	89.7%
College and/or Career Ready	NA	69.8%	65.6%
Dropout Rate	NA	.2%	1.3%
Average ACT Composite	NA	18.6	19.8
AP Qualifying Scores (3 or above)	NA	25.19%	49.71%

Career Pathways Available in the District

Agribusiness Systems; Agricultural Power Structural Technical Systems; Allied Health; Animal Science Systems; Automotive Maintenance and Light Repair Technician; Consumer & Family Management; Culinary & Food Services; Digital Design and Game Development; Early Childhood Education; Finance; Financial Services (Marketing); Horticulture and Plant Science Systems; Pre-Nursing; Project Lead The Way (PLTW) - Engineering

School Report Card Summary – description of data elements.

Label	Description – additional detail is available in the SRC Glossary http://applications.education.ky.gov/SRC/Glossary.aspx .
School Demographics and Contact information	School principal, superintendent and other contact information as of the date the School Report Card is published, not the year the card represents.
Grade Range	Lowest to highest grade in the school building.
Total Students	All enrollments minus all withdrawals for grades K-12 as reported to the Kentucky Department of Education as “membership” by the local superintendent at the close of school year.
Student Race	Individual race category as self-reported by the student, parent or guardian or observed by someone in the school. Includes Hispanic, African American, Asian, Other (American Indian or Alaska Native, Native Hawaiian or other Pacific Islander), White (not Hispanic), or two or more races as reported to the Kentucky Department of Education by the local superintendent at the close of school year.
Student-Teacher Ratio	Total students “membership” as of June 30 divided by the number of teachers on a full-time equivalent (FTE) basis, not including administrators, guidance counselors, media specialists or resource teachers.
Total Teachers	All teachers as of Sept. 15 each school year. It does not include administrators, guidance counselors, media specialists or resource teachers.
National Board Certified Teachers	The number of teachers certified by the National Board for Professional Teaching Standards (www.nbpts.org), as reported by the Education Professional Standards Board.
First Year and KTIP Teachers	Total percent of first year and Kentucky Teacher Internship Program (KTIP) teachers in the school, district or state. Includes those teachers who did not teach in Kentucky the previous year and all KTIP teachers.
Teacher Turnover	Teachers who left the classroom within a school regardless of whether re-employed at the same school in a nonteaching role, in another district, moved within district, left the Kentucky public school system or retired.
Lunch Status (percent free and reduced)	Indicates the percentage of students’ considered economically disadvantaged based on income eligibility for free or reduced-priced meals.
School Report Card website	Full website includes more information on schools, districts and state. Data sets are available to allow for viewing multiple schools simultaneously.
Performance of Tested Students	Percentage of students meeting proficient and distinguished levels and benchmarks on state assessments by grade level or high school (HS). Numbers are suppressed when necessary to protect student identification.
Mathematics	Percentage of students testing at or above the Proficient level on state assessment for math that includes KPREP for grades 3-8 and the Algebra II End-of-Course exam at the high school level.
Reading	Percentage of students testing at or above the Proficient level on state assessment for reading that includes KPREP for grades 3-8 and the English II End-of-Course exam at the high school level.
Social Studies	Percentage of students testing at or above the Proficient level on state assessment for social studies that includes KPREP for grades 5, 8 and the U.S. History End-of-Course exam at the high school level.
Language Mechanics	Percentage of students testing at or above the Proficient level on state assessment for language mechanics that includes KPREP for grades 4 and 6.
Writing	Percentage of students testing at or above the Proficient level on state assessment for On-Demand Writing that includes KPREP for grades 5, 8 and 11.
Science	Percentage of students testing at or above the Proficient level on state assessment for the Biology End-of-Course exam at the high school level.
ACT (Benchmarks)	Percent of students meeting the Kentucky Council on Postsecondary Education’s (CPE’s) college readiness benchmarks on the ACT (18 on English, 19 on mathematics, 20 on reading).
Attendance Rate	Reflects the proportion of students in attendance during the school year. The percentage is calculated by the sum of present days for all students divided by total present plus absent student days (i.e., Present/(Present + Absent)).
Graduation Rate	Four-year adjusted cohort graduation rate calculated as the number of students who graduate in four years with a regular high school diploma divided by the number of students who entered high school four years earlier.
College and/or Career Ready	Reflects students' college and/or career preparedness based on test scores and certifications earned. Measured by ACT benchmarks, college placement tests and career measures for high school. Students must be enrolled a full academic year (100 days or more) in order to be considered.
Dropout Rate	The dropout rate is calculated by dividing the number of dropouts by the dropout membership x 100. Dropout membership is taken from the growth factor membership report.
Average ACT Composite	Averaged composite score of all subject areas for all students administered the ACT Grade 11 examination.
AP Qualifying Scores	Calculated percentage of Advanced Placement tests taken that result in score of 3, 4 or 5.
Career Pathways Available in the District	A program of study that is a coherent, articulated sequence of rigorous academic and career/technical courses, including dual credit opportunities, that leads to postsecondary degrees and industry-recognized certifications and/or licensures. Career Pathways are developed, implemented and maintained in partnership among secondary and postsecondary institutions, business and employers. They are available to all students.